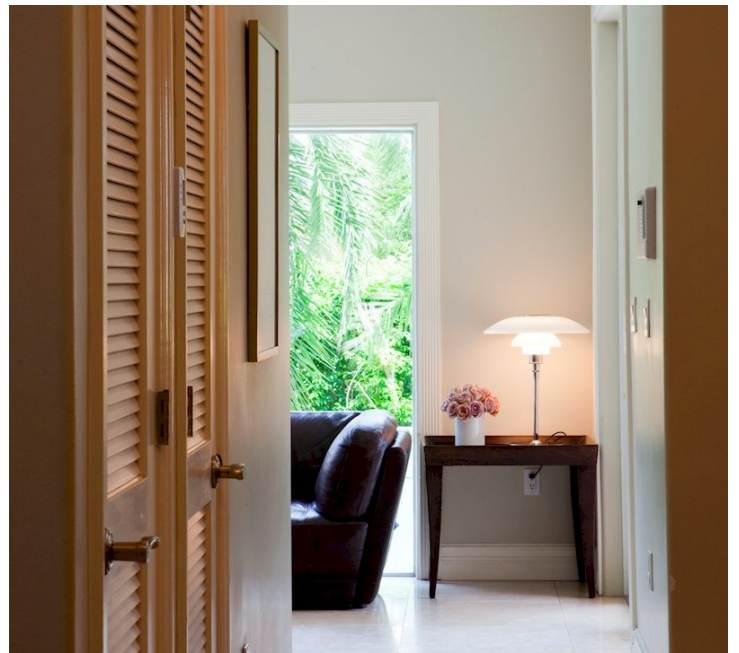

PH 4½ - 3½ GLASS TABLE



MIAMI PRIVATE

Design:

Poul Henningsen

Concept:

The fixture is designed based on the principle of a reflective three-shade system, which directs the majority of the light downwards. The shades are made of mouth-blown opal three-layer glass, which is glossy on top and sandblasted matt on the underside, giving a soft and diffuse light distribution.

Finish:

High lustre chrome plated. White opal glass.

Material:

Shades: Mouth-blown white opal glass. Anti glare ring: Purple, spun aluminium. Top plate: High lustre chrome plated, spun brass. Base: High

Weight:

Min: 9.9 kg Max: 10.0 kg

Class:

Ingress protection IP20. Electric shock protection II w/o ground.

Specification notes:

The innovation of light sources is ongoing. Consequently we only inform about the max. wattages. On www.louispoulsen.com we update a list of recommendable light sources.

lustre chrome plated, spun brass. Stem: High
lustre chrome plated, steel.

Mounting:

Cable type: Plastic cord with plug. Cable length:
2.7m. Light control: Switch in lamp stand.

Results (1)



LIGHT SOURCE

FINISH

ORDER-NO.

1X150WE27

HIGH LUSTRE CHROME PLATED

5744161501



SPAREPART

PRODUCT NAME:	ORDERING NUMBER:
PH 4½-3½ GLASS TABLE/FLOOR, MIDDLE SHADE	5744610612
PH 4½-3½ GLASS TABLE/FLOOR, LOWER SHADE	5744610625
PH 4½-3½ GLASS TABLE/FLOOR, TOPSHADE ACC	5744610722