



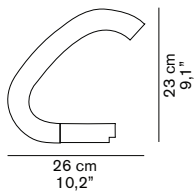
COLOMBO 281

Gianni e Joe Colombo
1962

Lampada da tavolo a luce indiretta e diffusa, base in acciaio verniciato e diffusore in Perspex.

Table lamp giving indirect and diffused light, lacquered steel base and Perspex diffuser.

DIMENSIONI/DIMENSIONS



MATERIALI/MATERIALS


metallo/PMMA
metal/PMMA

COLORE/COLORS

trasparente/transparent

SORGENTI/BULBS

1 x max 6 W - W4,3x8,5d

 fornita di lampadina
equipped with bulb

MARCHI/MARKS

CE / CB

INFORMAZIONI AGGIUNTIVE/ FURTHER INFORMATION



classe I
class I



cavo nero
black cable



interruttore on/off nero
black on/off switch



classe energetica: A
energy class: A

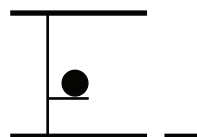
IMBALLO/PACKAGING



dim./dim. 36x30x33 cm / 14,1"x11,8"x12,9"
volume/volume 0,0356 m³ / 1,25 ft³
peso/weight 6,5 kg / 14,33 lb

TIPOLOGIA/TYPE

interno - lampada da tavolo
indoor - table lamp



CURVA FOTOMETRICA/ PHOTOMETRIC CURVE